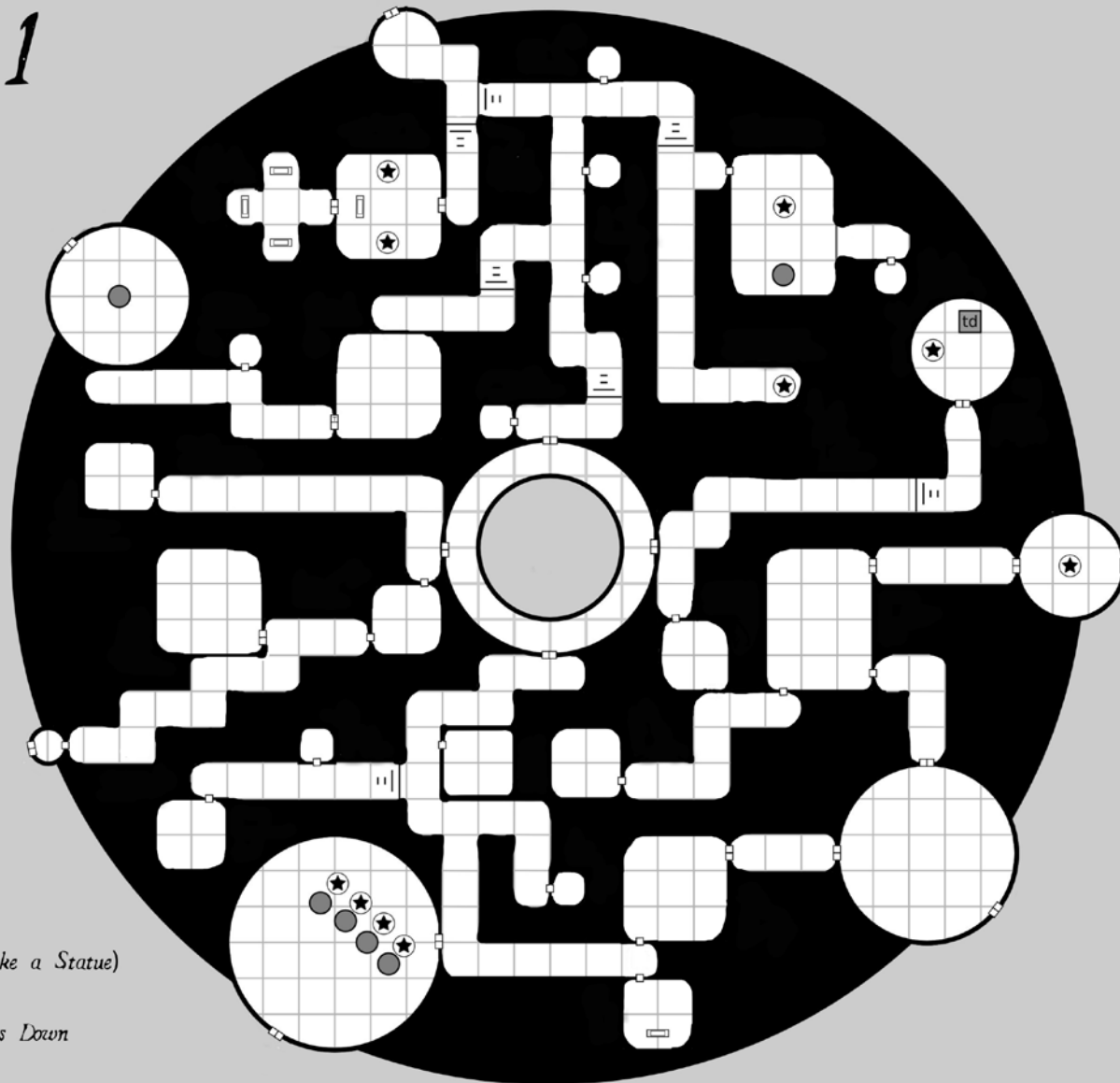
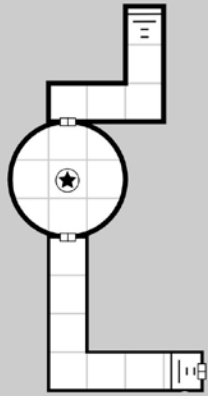
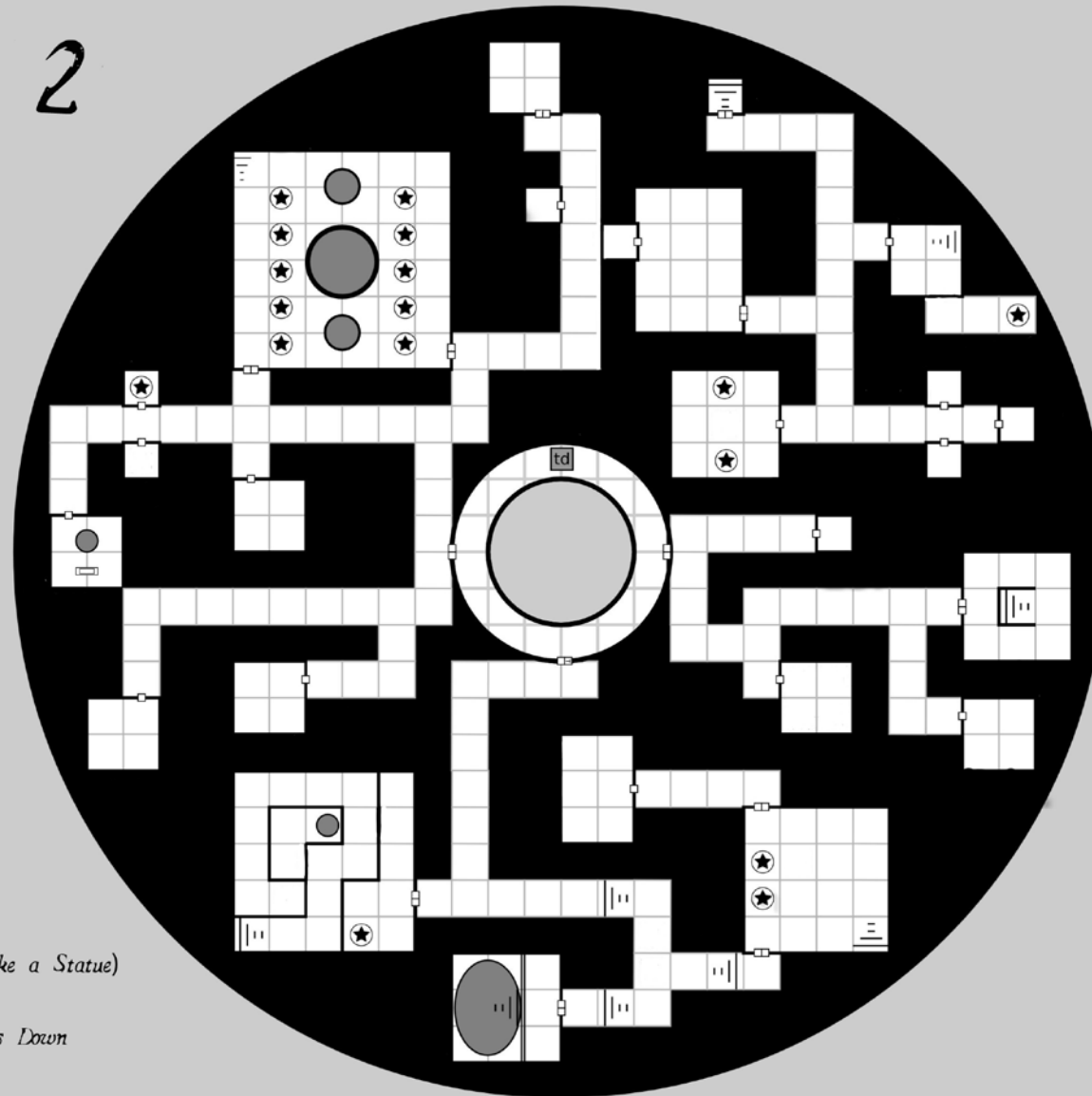


Level 1



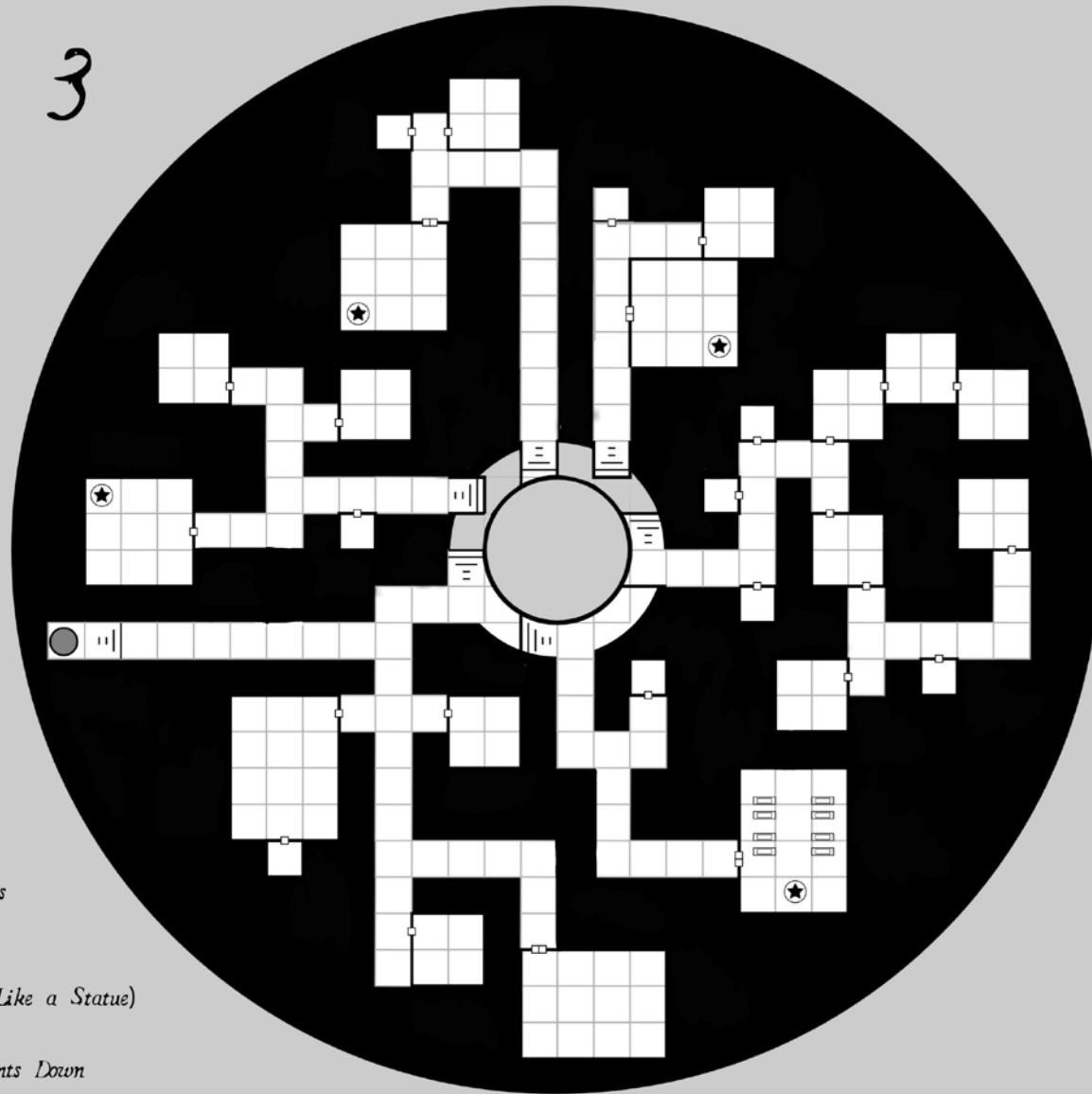
- Door
- Double Door
- § Secret Door
- ⊠ Locked Doors
- ⊠ Trapped Doors
- ▭ Altar or Sarcophagus
- ⊠ Trapped Area
- td Trapdoor
- ★ Object of Interest (Like a Statue)
- Pit, Pool, or Shaft
- || Stairs, Narrow Points Down

Level 2

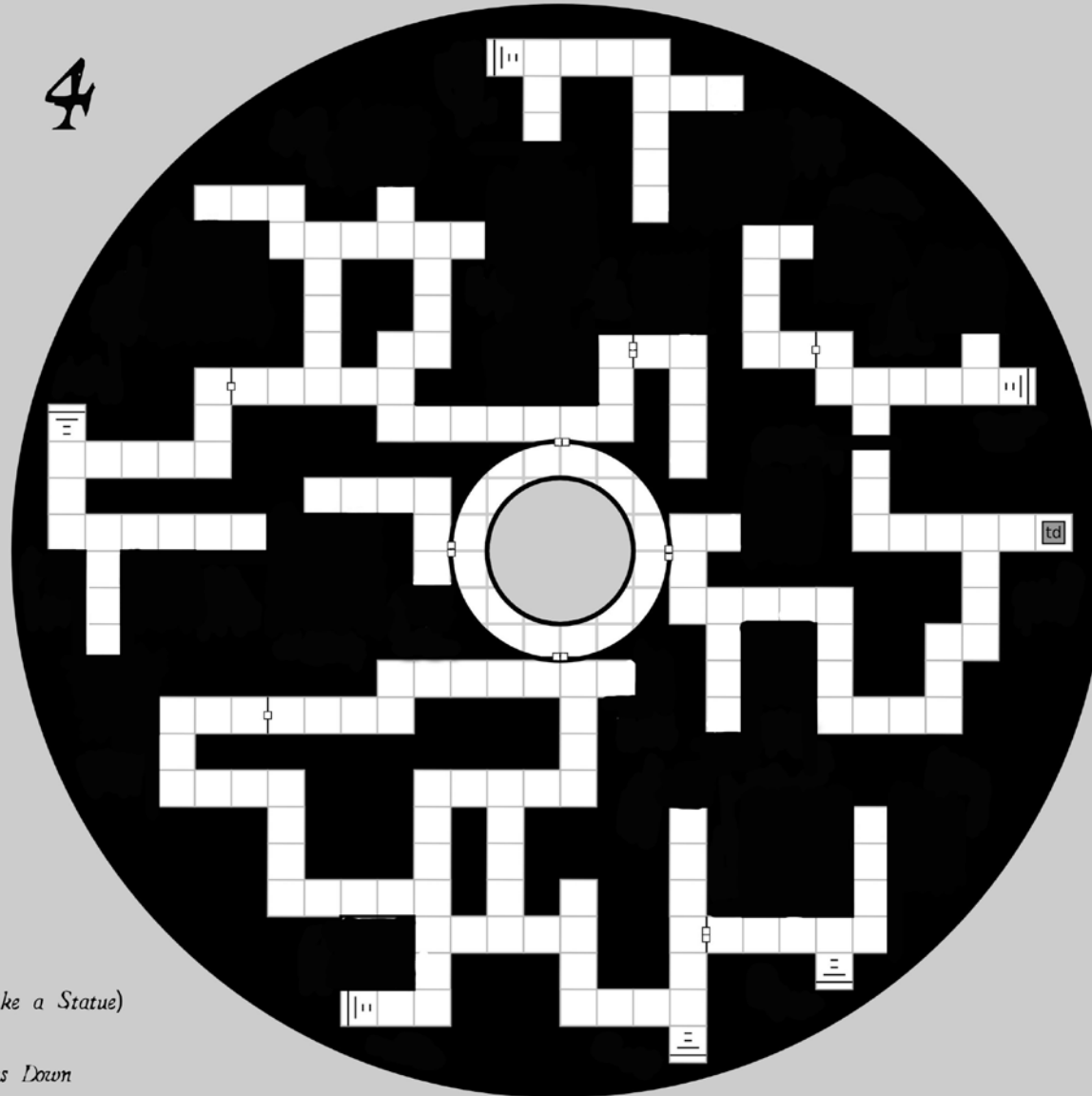


- ⊞ Door
- ⊞ Double Door
- ⊞ Secret Door
- ⊞ Locked Doors
- ⊞ Trapped Doors
- ⊞ Altar or Sarcophagus
- ⊞ Trapped Area
- td Trapdoor
- ★ Object of Interest (Like a Statue)
- Pit, Pool, or Shaft
- || Stairs, Narrow Points Down

Level 3

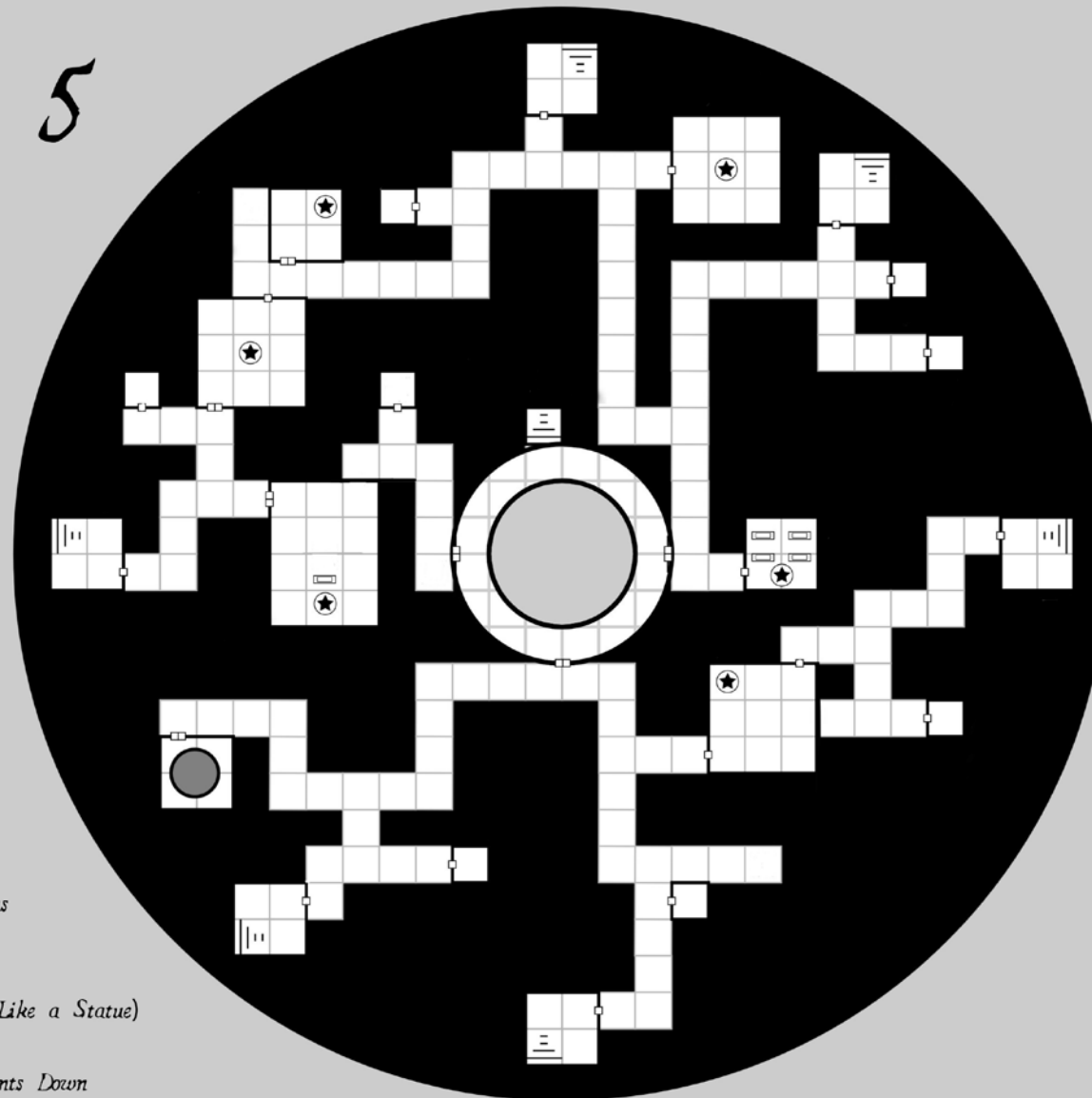


Level 4



- Door
- Double Door
- \$ Secret Door
- Locked Doors
- Trapped Doors
- ▭ Altar or Sarcophagus
- ▭ Trapped Area
- td Trapdoor
- ★ Object of Interest (Like a Statue)
- Pit, Pool, or Shaft
- || Stairs, Narrow Points Down

Level 5



- Door
- Double Door
- § Secret Door
- ★ Locked Doors
- ★ Trapped Doors
- Altar or Sarcophagus
- ⊥ Trapped Area
- ⊥ Trapdoor
- ★ Object of Interest (Like a Statue)
- Pit, Pool, or Shaft
- ||| Stairs, Narrow Points Down